

Erratum

Distribution and characterization of proliferative cells in the rat mandibular condyle during growth

Vivian Visnapuu, Timo Peltomäki, Kauko Isotupa, Tuomo Kantomaa and Hans Helenius

European Journal of Orthodontics (2000) **22**, 631–638

The publisher would like to apologise for the misrepresentation of Figure 2 in the above paper. The figure is shown correctly below.

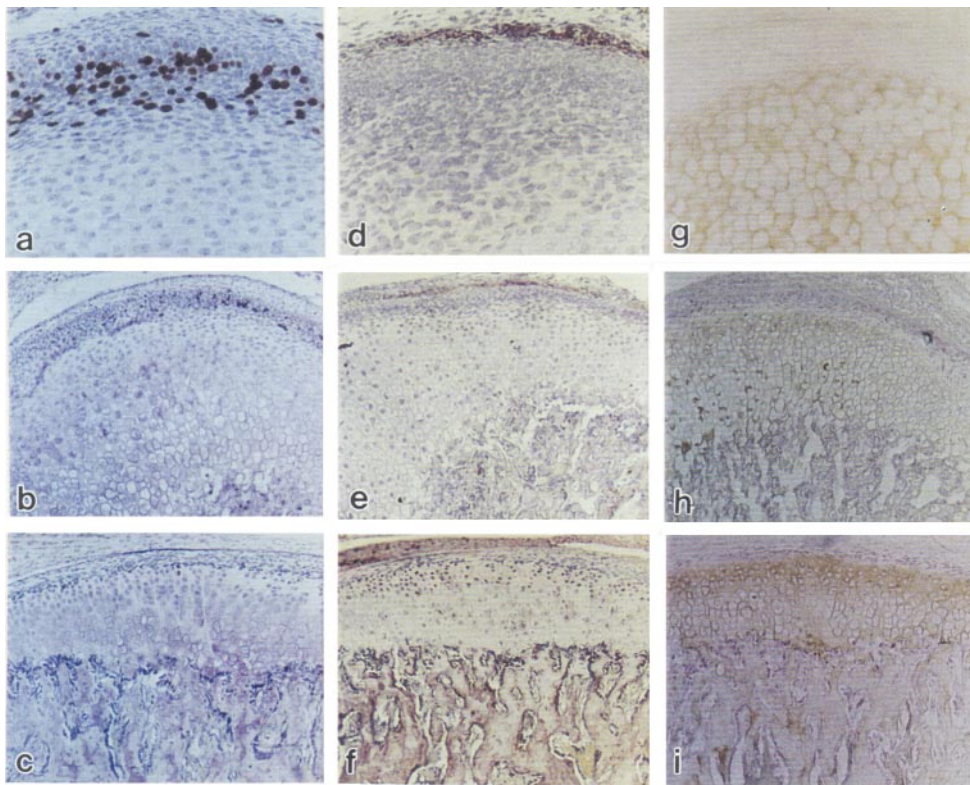


Figure 2 Sagittal section through the postero-superior area of the rat condylar cartilage stained for bromodeoxyuridine (a–c), type I collagen (d–f), and type II collagen (g–i). In 3-day-old rats (a, d, and g), there is considerable overlapping of the proliferative and the type II collagen secreting layers, whereas type I collagen is localized in the fibrous articulating layer. At 28 days (b, e, and h), there are proliferative cells only under the fibrous articular layer which is not stained for type II collagen. In addition to the articulating layer, type I collagen is found in the subchondral bone. At 70 days (c, f, and i) only a narrow layer of proliferative cells has collagen type II positive matrix, whereas staining for type I collagen is similar to that of the younger rats. For staining, see text. 3-day group, $\times 160$; 28- and 70-day groups, $\times 54$.

